



| Merepark Medical Centre Primary Care Newsletter 2024



SPRING '24

The Primary Care Team

The team will use this newsletter to celebrate successes across the network, highlight key or successful studies and share best practice. **We would be delighted if you have something for us, get intouch via our email: contact.merepark@nhs.net**
Happy New Year to all our patients at Merepark Medical Centre



Updates



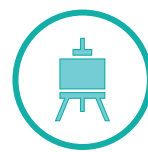
A huge WELCOME to our new staff joining the MMC team:

Dominique – Nurse Practitioner

Update on how to make requests to us:

- A medication request,
- Sending a clinical letter to be added to your medical records.
- Private work requests e.g travel insurance form.
- To inform us of a change of address or contact information.
- To request a fitness for work note and much more.

We ask that every request is sent only to contact.merepark@nhs.net and no other email address is used unless you are advised otherwise by a member of staff.



Highlights



We have celebrated Christmas Jumper Day in support of helping children in the UK and around the world.

MMC was also nominated for 'Practice of the year 2023', we were finalist! This is a big achievement for MMC and wouldn't be possible without all your support.

Thank you again to Victoria's Art Studio for our beautiful Spring window display making the practice look brighter for the new year ahead of us.



Daily Enquiries: contact.merepark@nhs.net

MMC Contact number: 01270 275600

Website: www.merepark.nhs.uk

Facebook/TikTok: Merepark Medical Centre


Address: Merepark Medical Centre, 12 Sandbach Rd South, Alsager, ST7 2LU

Greener Practice

Merepark Medical Centre is currently top in the Country for Greener Practice; There are lots of ways you can do to also help:

- Drop off your used inhalers in our inhaler recycling box at reception.
- Book a consultation with our pharmacist for a medication review.
- Register with our texting system for updates on appointments and to our electronic prescription service.
- Try to car share/walk/cycle or take public transport to your appointments at the practice.
- Ask about our social prescribing resources

League table



Merepark Medical Centre	404 points
Frome Medical Practice	401 points
Hillview Surgery	327 points
Portsmouth Group Practi...	301 points
The Wooda Surgery	284 points
Brannam Medical Centre	266 points
Mile Oak Medical Centre	266 points
Newquay Health Team	238 points
Herstmonceux Integrati...	236 points
The Corner Surgery	236 points



UPCOMING EVENTS

MMC events, Local Support, Services in our Area

- Merepark Medical Centre Open Day with PMA will be in Spring this year
- FREE Cooking Class in Sandbach – new Cooking Class in Sandbach on 22nd February, 10 – 12pm at the Wesley Centre. To book a place, email wildsaltcic@gmail.com
- Stroke Survivors Group in Sandbach – The Stroke Survivors runs on a Wednesday from 11am to 1pm at Sandbach Rugby Club, Bradwall Road, Sandbach, CW11 1RA. For more information about the group please visit <https://strokesurvivorsgroup.co.uk> or 01270 335061 or email Strokesurvivorgroup@gmail.com

Join the Patient Participation Group

The Patient Participation Group (PPG) is comprised of patients registered at Merepark Medical Centre (MMC) with a keen interest in the delivery of healthcare in the area. It is continually evolving to meet local needs. It is really up to MMC and the Group's members to define the PPG's role and activity but these will typically include:

- providing the patient perspective on the services that are provided by MMC;
- working with MMC to improve patient communication;
- encouraging patients to take more responsibility for their health;
- providing practical support for others in the community.

The PPG is not MMC's complaint system (there is already a robust complaints procedure in place); nor is it a forum to air personal issues. But neither is it a Doctors' fan club.

To be valuable the PPG must have the confidence to challenge MMC in line with any issue brought forward. It is self organising and patient led. It is a critical friend of the Practice. Ultimately the benefits of an effective PPG are felt by the patients, their Practice and the wider community in which it operates.

Who can become involved?

Any patient registered with MMC with an active interest in the delivery of healthcare in the area is welcome to become involved in the PPG. There are no particular skills or qualifications required - just a willingness to engage with the group. Meetings of the Group are currently monthly on Tuesdays mornings the but Group is open to alternative approaches including on-line meetings. To join pick up a leaflet from our reception desk, fill it in and hand it back to one of our team or you can email on contact.merepark@nhs.net

